

Būves punkta koordinātas  
Latvijas koordinātu sistēmā LKS-92

Būves punkta Nr	x	y
1	194672.05	59364.92
2	194722.33	659383.19

APBŪVES PLĀNS

Zemes vienības kadastra apzīmējums

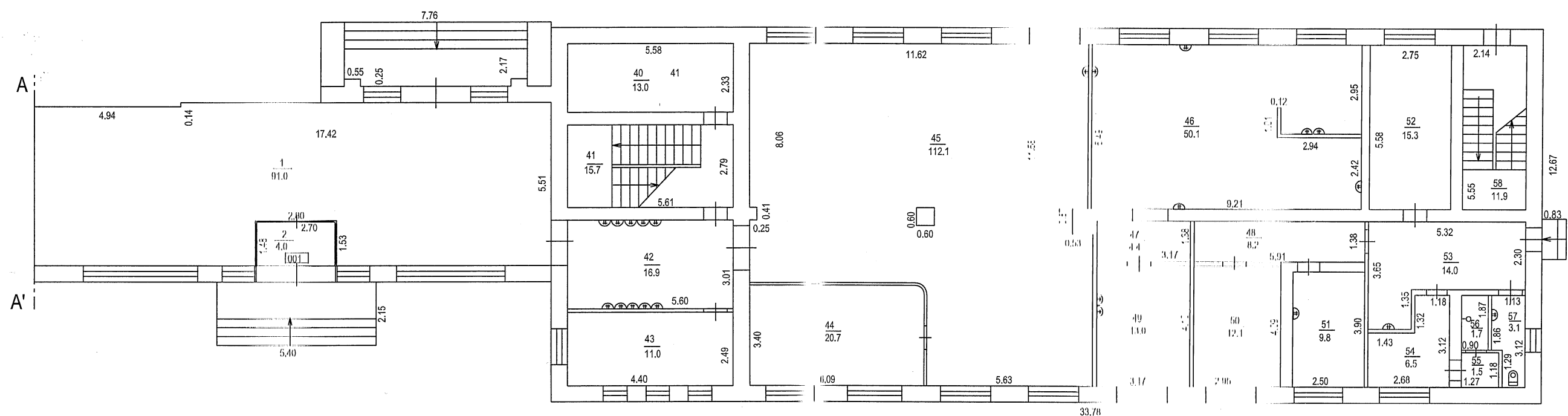
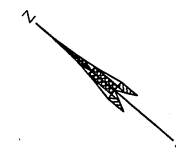
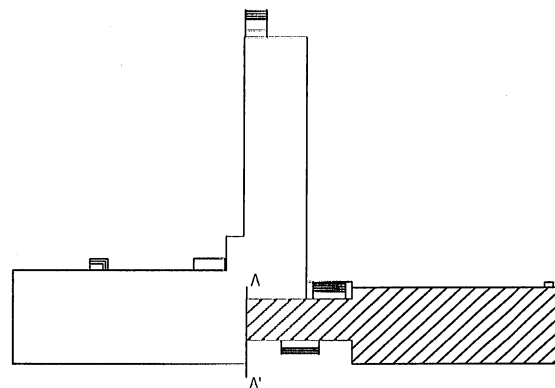
0500 003 3203

Mērogs

1:500

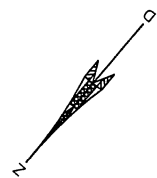
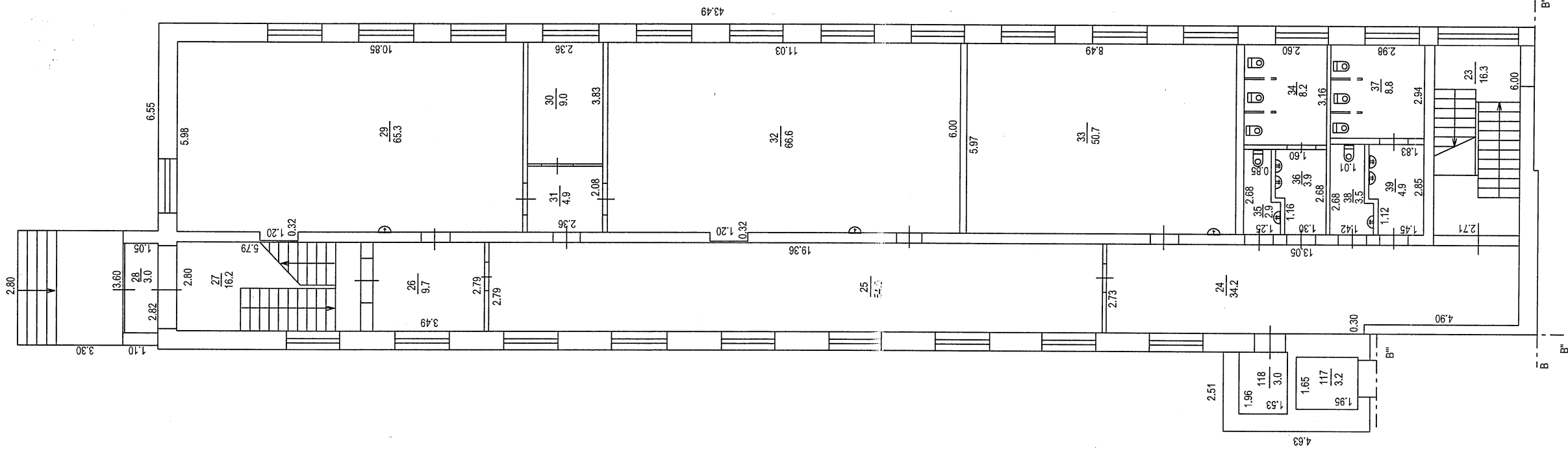
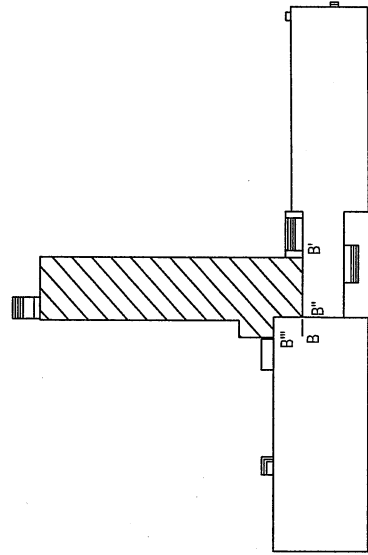
LPP.

8



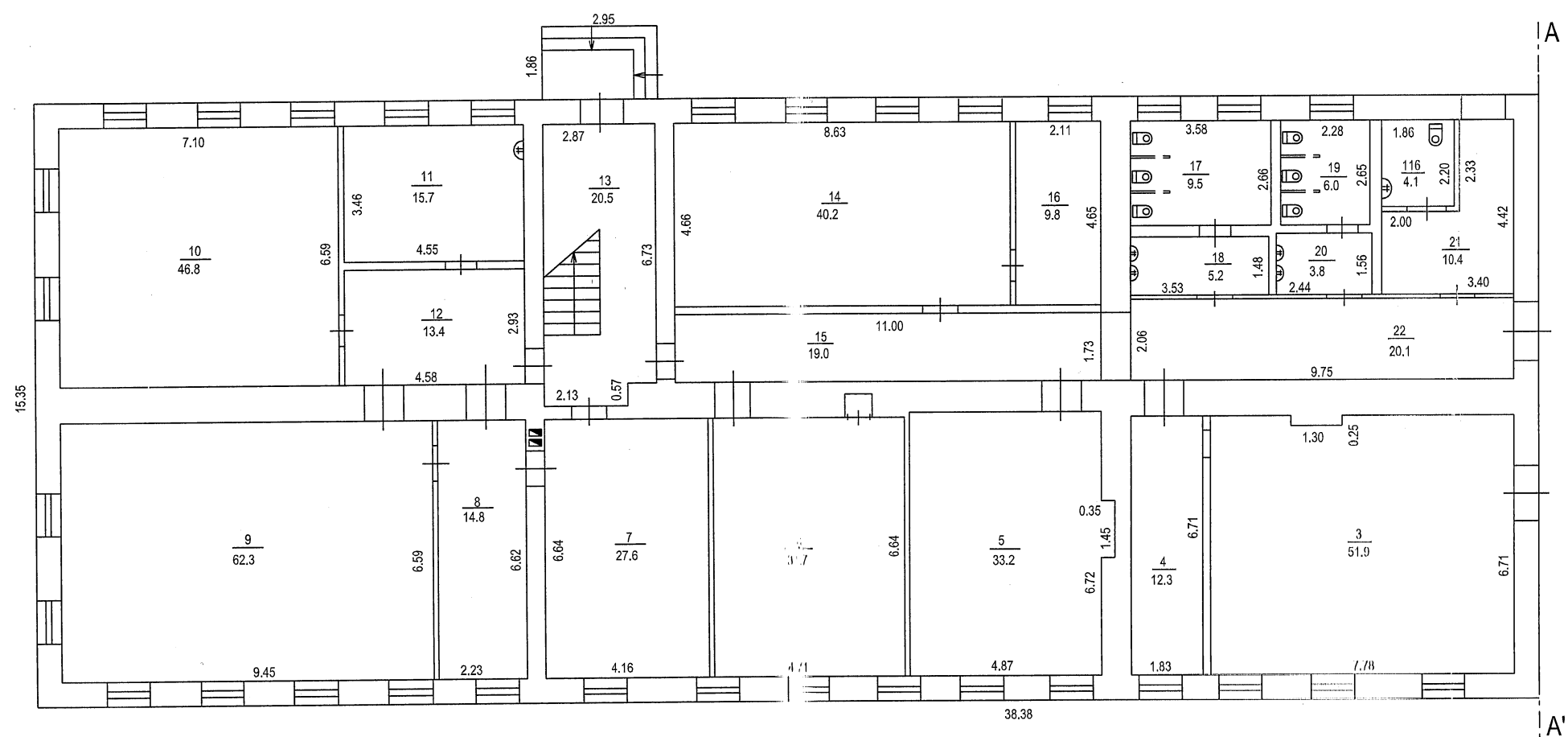
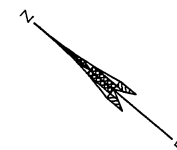
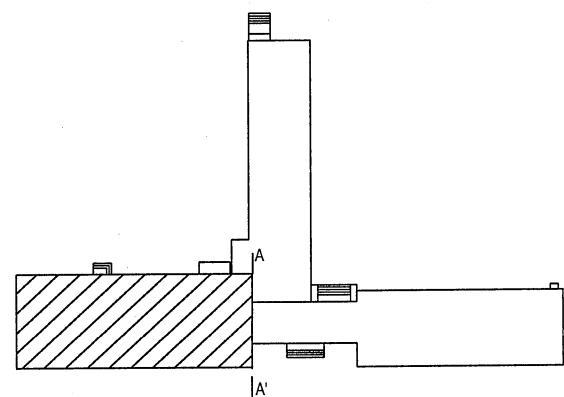
## STĀVA PLĀNS

Kadastra apzīmējums	Stāvs	Mērogs	LPP.
0500 003 3203 001	1	1 : 150	9



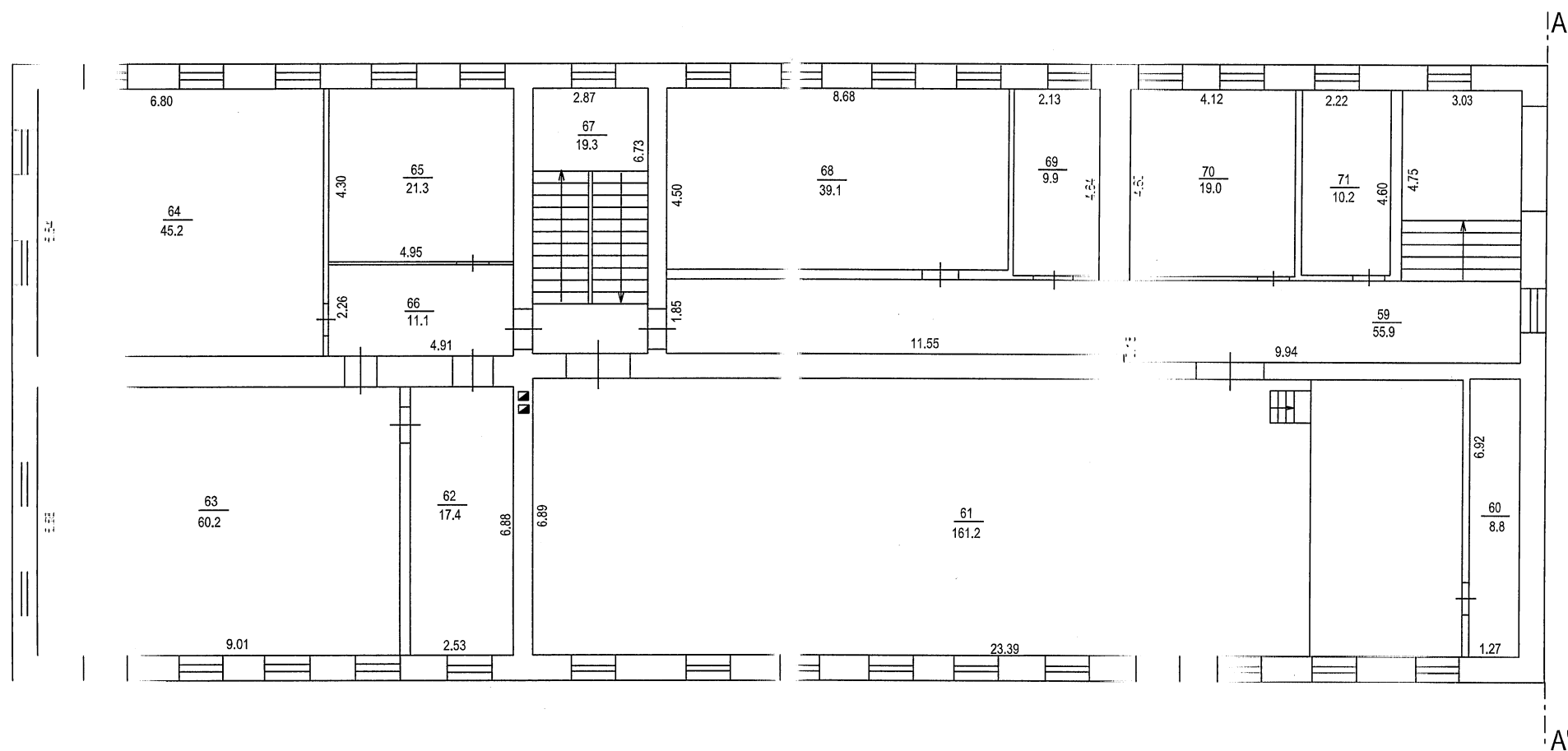
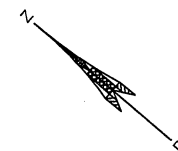
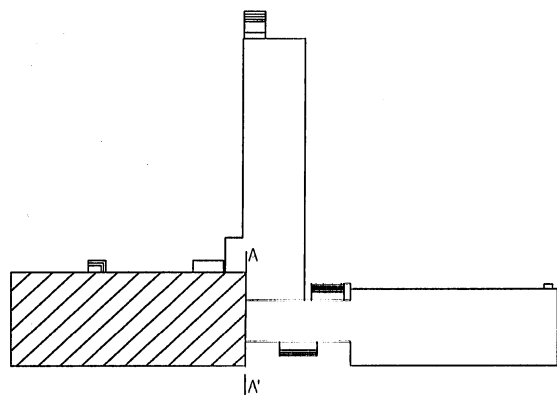
# STĀVA PLĀNS

Kadastra apzīmējums	Stāvs	Mērogs	LPP.
0500 003 3203 001	1	1 : 150	10



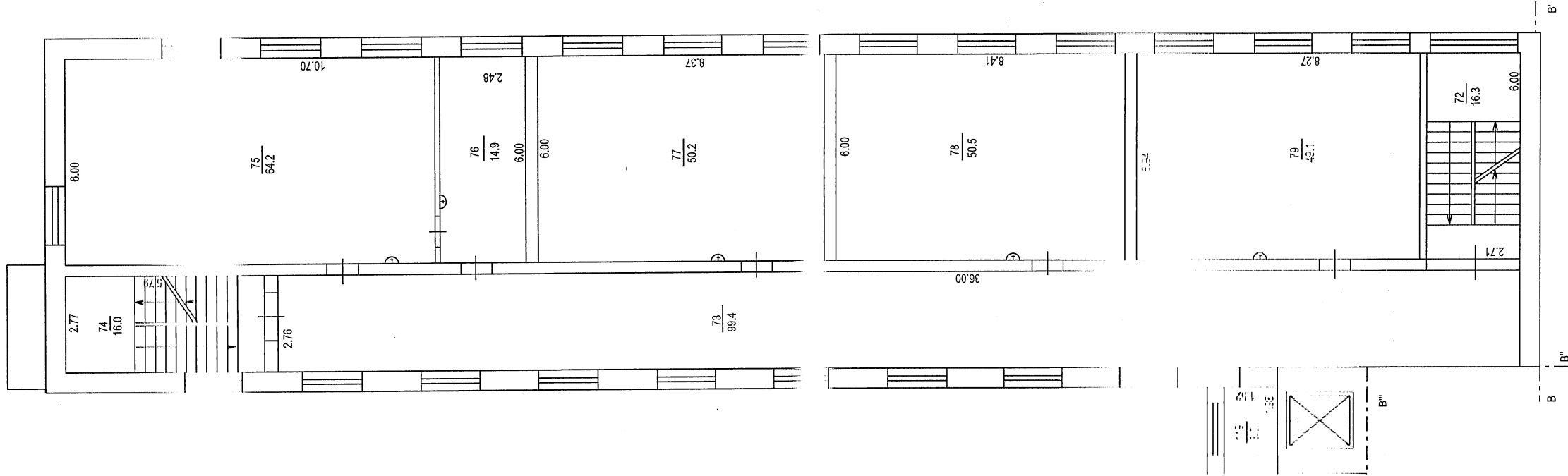
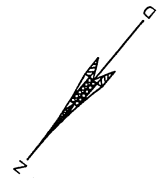
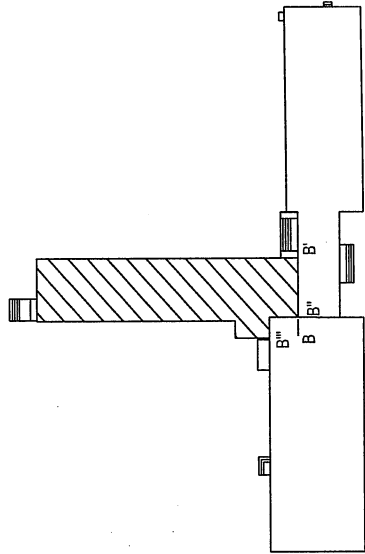
# STĀVA PLĀNS

Kadastra apzīmējums	Stāvs	Mērogs	LPP.
0500 003 3203 001	1	1 : 150	11



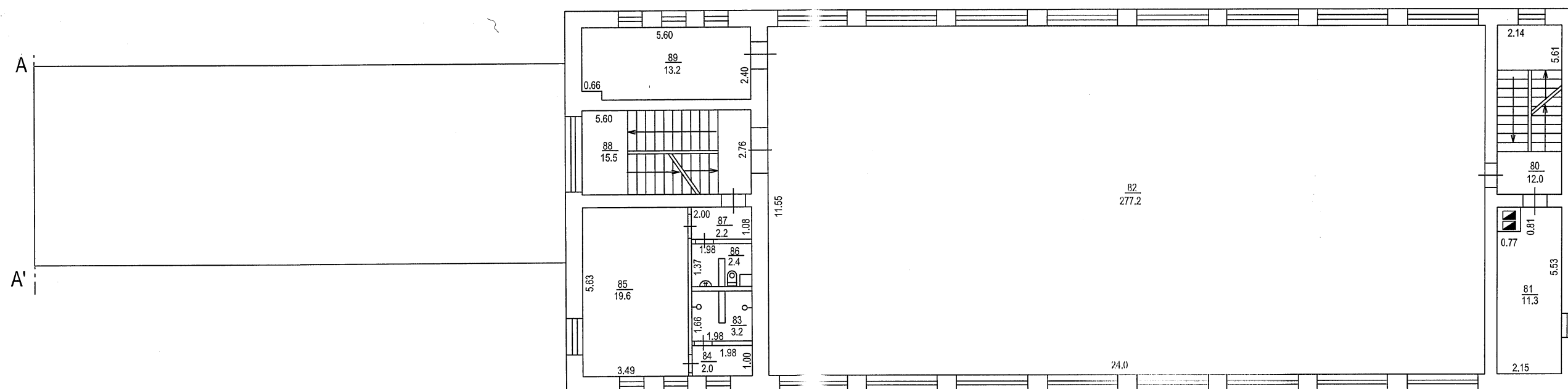
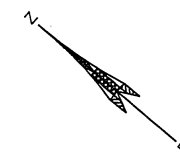
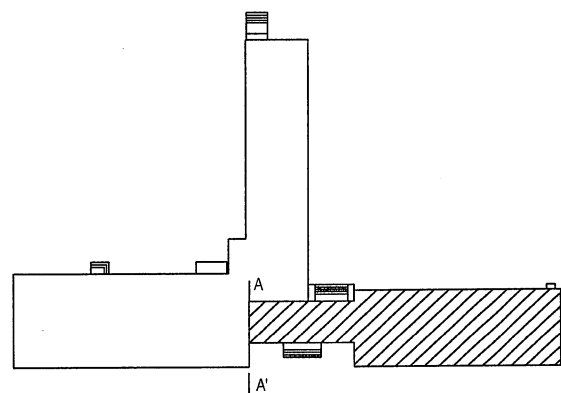
## STĀVA PLĀNS

Kadastra apzīmējums	Stāvs	Mērogs	LPP.
0500 003 3203 001	2	1 : 150	12



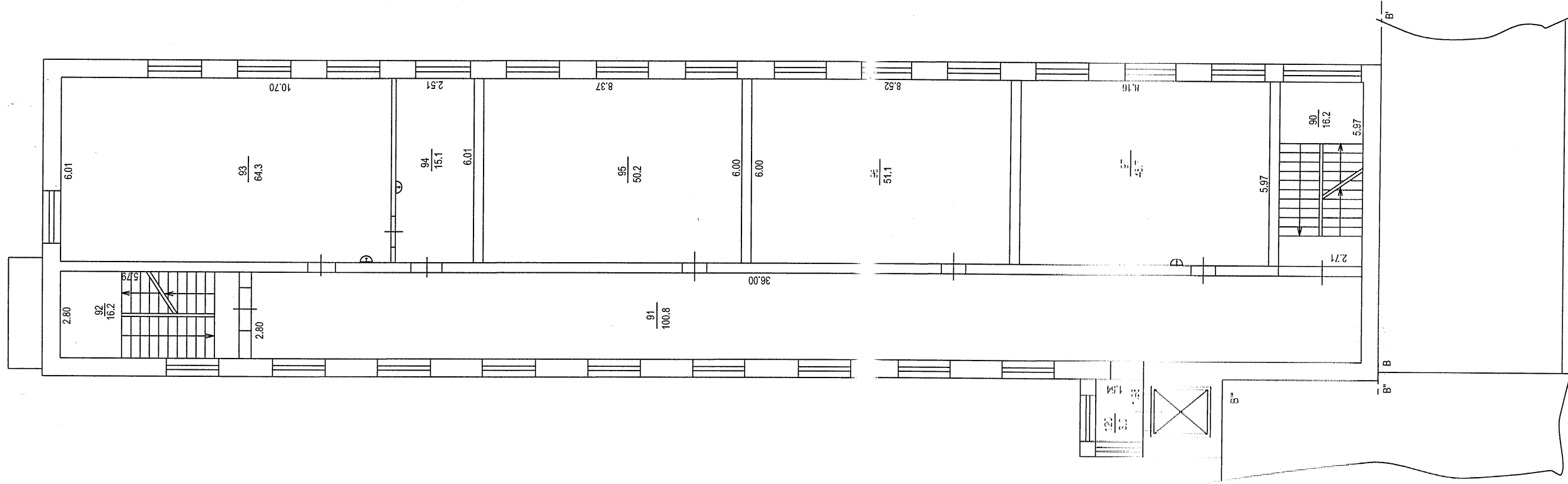
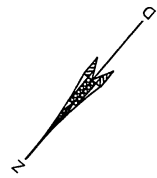
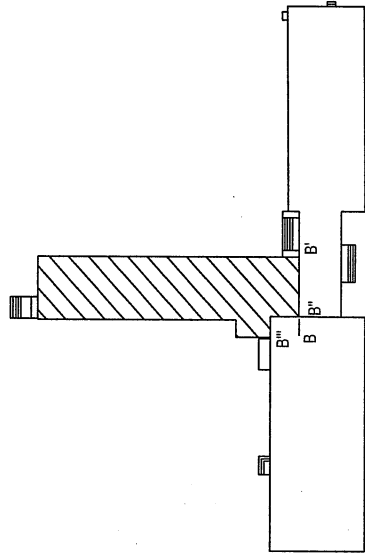
STĀVA PLĀNS

Kadastra apzīmējums	Stāvs	Mērogs	LPP.
0500 003 3203 001	2	1 : 150	13



## STĀVA PLĀNS

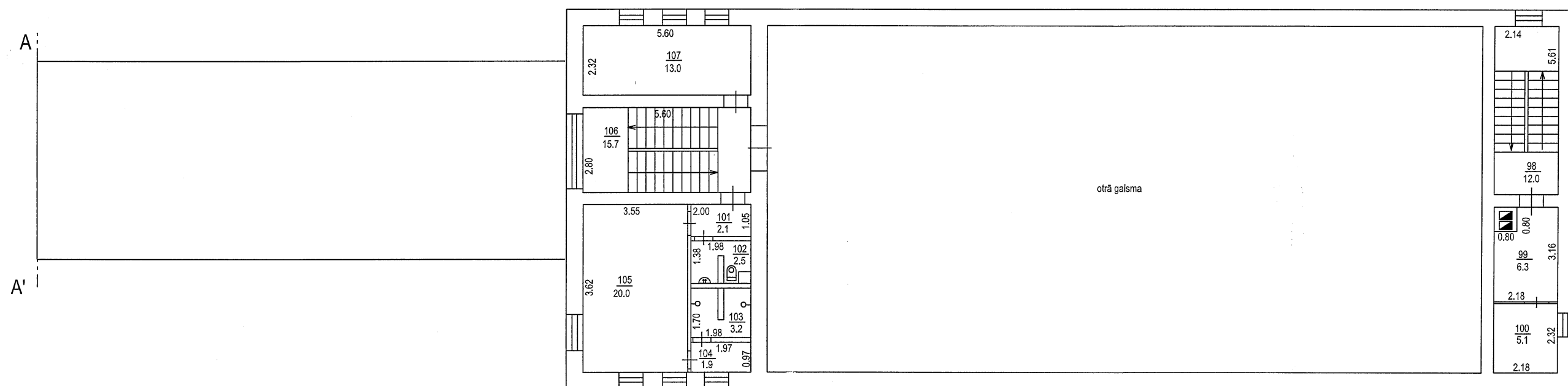
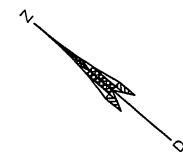
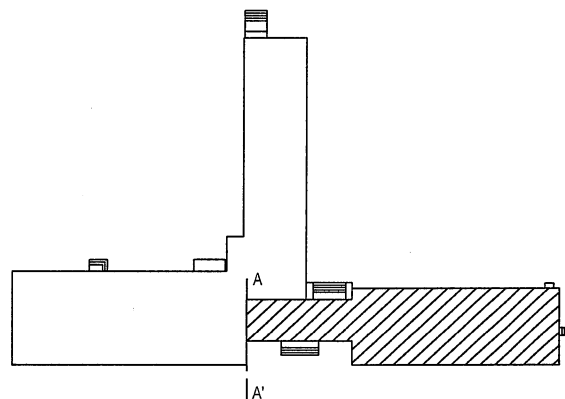
Kadastra apzīmējums	Stāvs	Mērogs	LPP.
0500 003 3203 001	2	1 : 150	14



# STĀVA PLĀNS

Kadastra apzīmējums	Stāvs	Mērogs	LPP.
0500 003 3203 001	3	1 : 150	15

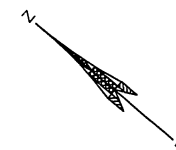
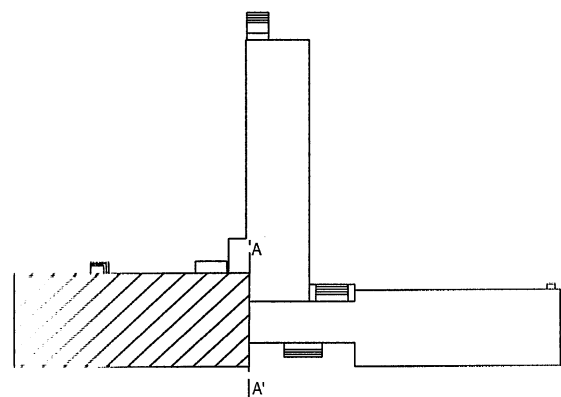




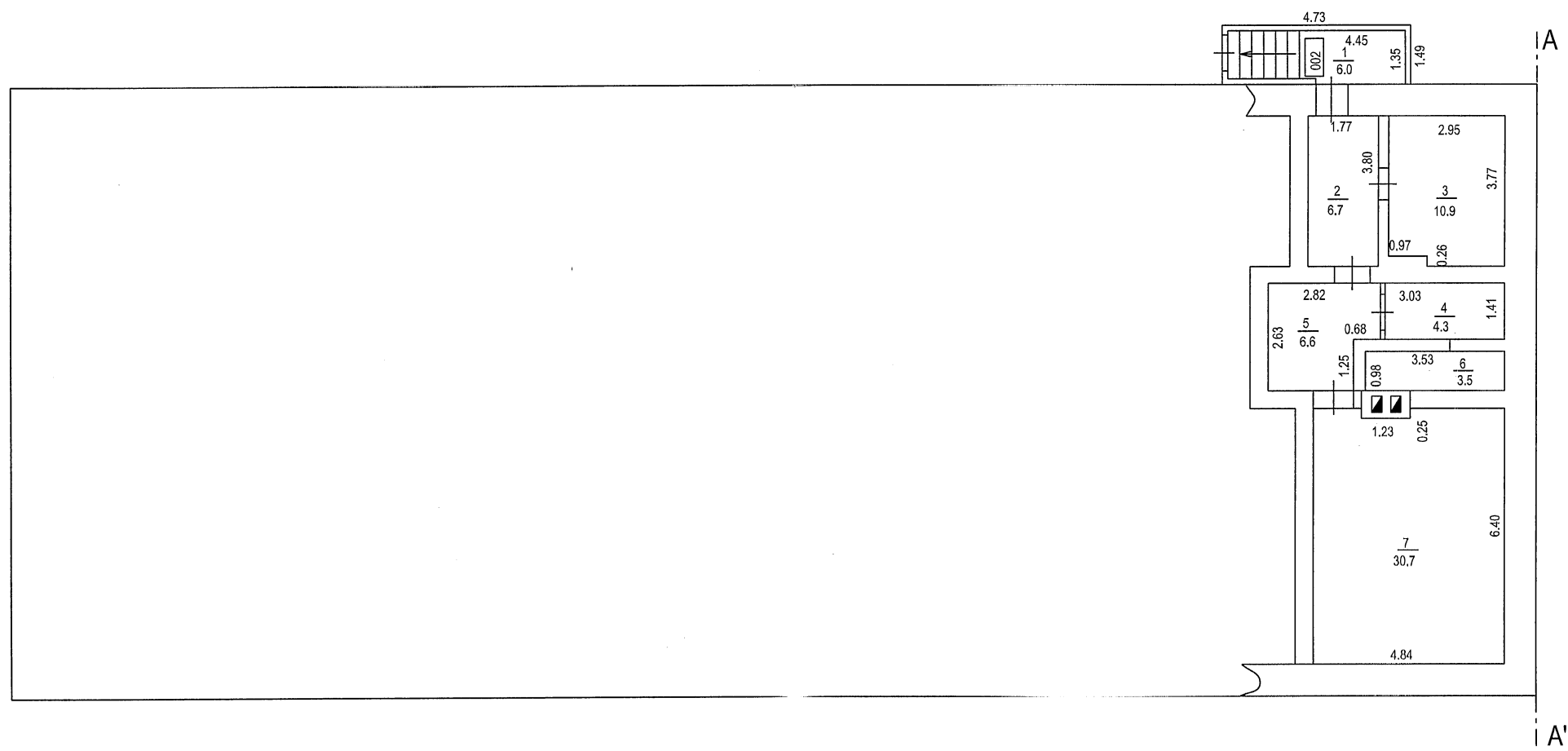
## STĀVA PLĀNS

Kadastra apzīmējums	Stāvs	Mērogs	LPP.
0500 003 3203 001	3	1 : 150	16





pagrabs



# STĀVA PLĀNS

Kadastra apzīmējums  
0500 003 3203 001

Stāvs  
-1

Mērogs  
1 : 150

LPP.  
18